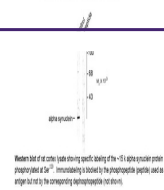

Product Datasheet

Snca Antibody (orb1273562)

Description	Snca Antibody
Species/Host	Rabbit
Reactivity	Bovine, Canine, Human, Mouse, Rat
Conjugation	Unconjugated
Tested Applications	WB
Immunogen	Phosphopeptide corresponding to amino acid residues surrounding the phospho-Ser129 of alpha synuclein.
Target	Snca
Form/Appearance	Liquid
Concentration	batch dependent
Storage	Alpha synuclein antibody can be stored at -20°C and is stable at -20°C for at least 1 year.
Note	For research use only
Application notes	The antibody has been directly tested for reactivity in Western blots with rat tissue. It is anticipated that the antibody will react with bovine, canine, human, mouse, and non-human primate based on the fact that these species have 100% homology with the amino acid sequence used as antigen.
Clonality	Polyclonal
MW	15
Uniprot ID	P37377
NCBI	P37377
Dilution Range	The antibody has been directly tested for reactivity in Western blots with rat tissue. It is anticipated that the antibody will react with bovine, canine, human, mouse, and non-human primate based on the fact that these species have 100% homology with the amino acid sequence used as antigen.
Expiration Date	12 months from date of receipt.

Anti-Phospho-Ser¹²⁹ Alpha Synuclein



Western blot of rat cortex lysate showing specific binding of the anti-Ser129 alpha synuclein antibody (1:1000) to the phospho-Ser129 alpha synuclein peptide. The band is indicated by an arrowhead.