

---

## Product Datasheet

### Map2k5 Antibody (orb1273559)

**Description**

Map2k5 Antibody

**Species/Host**

Rabbit

**Reactivity**

Bovine, Canine, Frog, Gallus, Human, Mouse, Rat, Zebrafish

**Conjugation**

Unconjugated

**Tested Applications**

WB

**Immunogen**

Phosphopeptide corresponding to amino acid residues surrounding the phospho-Ser311, Thr315 of MEK5.

**Target**

Map2k5

**Form/Appearance**

Liquid

**Concentration**

batch dependent

**Storage**

MEK5 antibody can be stored at -20°C and is stable at -20°C for at least 1 year.

**Note**

For research use only

**Application notes**

The antibody has been directly tested for reactivity in Western blots with rat tissue. It is anticipated that the antibody will react with mouse, human, chicken, bovine, canine, non-human primate, Xenopus, and Zebrafish tissues based on the fact that these species have 100% homology with the amino acid sequence used as antigen.

**Clonality**

Polyclonal

**MW**

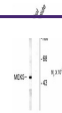
49

**Uniprot ID**
[Q62862](#)
**NCBI**
[Q62862](#)
**Dilution Range**

The antibody has been directly tested for reactivity in Western blots with rat tissue. It is anticipated that the antibody will react with mouse, human, chicken, bovine, canine, non-human primate, Xenopus, and Zebrafish tissues based on the fact that these species have 100% homology with the amino acid sequence used as antigen.

**Expiration Date**

12 months from date of receipt.

 Anti-Phospho Ser<sup>311</sup>, Thr<sup>315</sup> MEK5


Western blot of rat testes lysate showing specific labeling of the MEK5 protein (Cortis). Immunoblotting is blocked by preabsorption with the phospho-peptide used as antigen. \*Positive, but not by the corresponding non-phospho-peptide (not shown).

Western blot of rat testes lysate showing specific labeling of the MEK5 protein (Cortis). Immunoblotting is blocked by preabsorption with the phospho-peptide used as antigen. \*Positive, but not by the corresponding non-phospho-peptide (not shown).