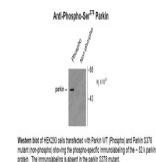


## Product Datasheet

### PARK2 Antibody (orb1273556)

<b>Description</b>	PARK2 Antibody
<b>Species/Host</b>	Rabbit
<b>Reactivity</b>	Human
<b>Conjugation</b>	Unconjugated
<b>Tested Applications</b>	WB
<b>Immunogen</b>	Phosphopeptide corresponding to amino acid residues surrounding the phospho-Ser378 of human parkin.
<b>Target</b>	PARK2
<b>Form/Appearance</b>	Liquid
<b>Concentration</b>	batch dependent
<b>Storage</b>	Parkin antibody can be stored at -20°C and is stable at -20°C for at least 1 year.
<b>Note</b>	For research use only
<b>Application notes</b>	The antibody has been directly tested for reactivity in Western blots with human tissue.
<b>Clonality</b>	Polyclonal
<b>MW</b>	52
<b>Uniprot ID</b>	<a href="#">O60260</a>
<b>NCBI</b>	<a href="#">O60260</a>
<b>Dilution Range</b>	The antibody has been directly tested for reactivity in Western blots with human tissue.
<b>Expiration Date</b>	12 months from date of receipt.



Western blot of HEK293 cells transfected with Parkin (17 Phospho and Parkin 123), using anti-phospho-Ser378 (orb1273556) and anti-Parkin (orb1273556) antibody. The immunoblot shows the presence of Parkin (52 kDa).