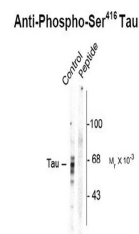


Product Datasheet

Mapt Antibody (orb1273536)

Description	Mapt Antibody
Species/Host	Rabbit
Reactivity	Bovine, Gallus, Human, Mouse, Rat
Conjugation	Unconjugated
Tested Applications	WB
Immunogen	Phosphopeptide corresponding to amino acid residues surrounding the phospho-Ser416 of rat tau.
Target	Mapt
Form/Appearance	Liquid
Concentration	batch dependent
Storage	Tau (Ser416) antibody can be stored at -20°C and is stable at -20°C for at least 1 year.
Note	For research use only
Clonality	Polyclonal
MW	59/65/68
Uniprot ID	P19332
NCBI	P19332
Expiration Date	12 months from date of receipt.



Western blot of rat brain homogenate sho...