

## Product Datasheet

### Camk2a Antibody (orb1273535)

**Description**

Camk2a Antibody

**Species/Host**

Rabbit

**Reactivity**

Frog, Human, Mouse, Rat

**Conjugation**

Unconjugated

**Tested**

WB

**Applications**
**Immunogen**

CaM Kinase II (Thr286) polyclonal antibody was raised against a synthetic phosphopeptide corresponding to amino acid residues surrounding the phosphorylated-Thr286 found in rat brain CaM Kinase II.

**Target**

Camk2a

**Form/Appearance**

Liquid

**Concentration**

batch dependent

**Storage**

For long term storage  $-80^{\circ}\text{C}$  is recommended, but shorter term storage at  $-20^{\circ}\text{C}$  is also acceptable as aliquots may be taken without freeze/thawing due to the presence of 50% glycerol. Stable for one year.

**Note**

For research use only

**Application notes**

Antibody dilutions and tissue load should be based on tissue type and expected phosphorylation state. Western blots of rat brain lysates with phospho- and dephosphopeptide competition were used to establish the phospho-specificity of the antibody. Applications include Dot Blot (DB) and Western Blot (WB). Dot Blots and Western Blots performed with each lot and working dilutions internally tested under ideal conditions for DB and WB were 1:1000. Suitability for Immunohistochemistry (IHC) has not been determined. Human, mouse, rat and Xenopus have 100% amino acid sequence identity with the antigen used to raise the antibody.

**Clonality**

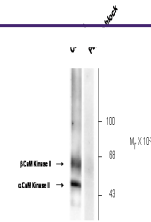
Polyclonal

**MW**

50/60

**Uniprot ID**
[P11275](#)
**NCBI**
[P11275](#)
**Dilution Range**

Antibody dilutions and tissue load should be based on tissue type and expected phosphorylation state. Western blots of rat brain lysates with phospho- and dephosphopeptide competition were used to establish the phospho-specificity of the antibody. Applications include

 Anti-Phospho Thr<sup>286</sup> CaM Kinase II


Western blot of rat cortex lysate showing...