

---

## Product Datasheet

### ATF2 Antibody (orb1273534)

**Description**

ATF2 Antibody

**Species/Host**

Rabbit

**Reactivity**

Human

**Conjugation**

Unconjugated

**Tested**

IHC, WB

**Applications**
**Immunogen**

ATF-2 (Ser 490/498) polyclonal antibody was raised against a synthetic phosphopeptide corresponding to amino acids residues surrounding the human phospho Ser490/498 of ATF2.

**Target**

ATF2

**Form/Appearance**

Liquid

**Concentration**

batch dependent

**Storage**

For long term storage  $-80^{\circ}\text{C}$  is recommended, but shorter term storage at  $-20^{\circ}\text{C}$  is also acceptable as aliquots may be taken without freeze/thawing due to the presence of 50% glycerol. Stable for one year.

**Note**

For research use only

**Application notes**

The antibody also recognizes the phosphorylated 54k splice form of ATF2. Applications include Dot Blots (DB), Immunohistochemistry (IHC) and Western Blots (WB). When internally tested under ideal conditions the working dilutions were 1:1000 for DB, IHC and WB.

**Clonality**

Polyclonal

**MW**

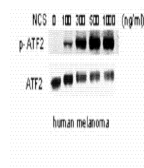
74

**Uniprot ID**
[P15336](#)
**NCBI**
[P15336](#)
**Dilution Range**

The antibody also recognizes the phosphorylated 54k splice form of ATF2. Applications include Dot Blots (DB), Immunohistochemistry (IHC) and Western Blots (WB). When internally tested under ideal conditions the working dilutions were 1:1000 for DB, IHC and WB.

**Expiration Date**

12 months from date of receipt.

 Anti-Phospho Ser<sup>490</sup> ATF2


Western blot of human melanoma cells inc...