
Product Datasheet

Ppp1r1b Antibody (orb1273532)

Description

Ppp1r1b Antibody

 Anti-Phospho-Thr³⁴-DARPP-32

Species/Host

Rabbit

Reactivity

Frog, Human, Mouse, Rat

Conjugation

Unconjugated

Tested

WB

Applications
Immunogen

DARPP-32 (Thr34) polyclonal antibody was raised against a synthetic phosphopeptide corresponding to amino acids residues surrounding the phospho Thr34 of DARPP-32.

Target

Ppp1r1b

Form/Appearance

Liquid

Concentration

batch dependent

Storage

For long term storage -80°C is recommended, but shorter term storage at -20°C is also acceptable as aliquots may be taken without freeze/thawing due to the presence of 50% glycerol. Stock solutions are stable for a minimum of 1 year at -20°C.

Note

For research use only

Application notes

Applications include Dot Blots (DB) and Western Blots (WB). Suitability for Immunohistochemistry (IHC) has not yet been determined. Rabbit anti-DARPP-32 (Thr34) recognizes human, mouse, and rat forms of the protein. When internally tested under ideal conditions the working dilutions were 1:1000 for DB and WB.

Clonality

Polyclonal

MW

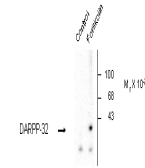
32

Uniprot ID
[Q6J4I0](#)
NCBI
[Q6J4I0](#)
Dilution Range

Applications include Dot Blots (DB) and Western Blots (WB). Suitability for Immunohistochemistry (IHC) has not yet been determined. Rabbit anti-DARPP-32 (Thr34) recognizes human, mouse, and rat forms of the protein. When internally tested under ideal conditions the working dilutions were 1:1000 for DB and WB.

Expiration Date

12 months from date of receipt.



Western blot of rat caudate showing phospho...