

---

## Product Datasheet

### Ppp1r1b Antibody (orb1273531)

**Description**

Ppp1r1b Antibody

 Anti-Phospho-Thr<sup>75</sup> DARPP-32

**Species/Host**

Rabbit

**Reactivity**

Human, Mouse

**Conjugation**

Unconjugated

**Tested**

WB

**Applications**
**Immunogen**

DARPP-32 (Thr75) polyclonal antibody was raised against a synthetic phosphopeptide corresponding to amino acids residues surrounding the phospho Thr75 of DARPP-32. The sequence of the immunogen is identical in human and mouse.

**Target**

Ppp1r1b

**Form/Appearance**

Liquid

**Concentration**

batch dependent

**Storage**

For long term storage -80°C is recommended, but shorter term storage at -20°C is also acceptable as aliquots may be taken without freeze/thawing due to the presence of 50% glycerol. Stock solutions are stable for a minimum of 1 year at -20°C.

**Note**

For research use only

**Application notes**

Applications include Dot Blots (DB) and Western Blots (WB). Suitability for Immunohistochemistry (IHC) has not yet been determined. Rabbit anti-DARPP-32 (Thr75) recognizes human and mouse forms of the protein. When internally tested under ideal conditions the working dilutions were 1:1000 for DB and WB.

**Clonality**

Polyclonal

**MW**

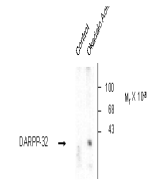
32

**Uniprot ID**
[Q6J4I0](#)
**NCBI**
[Q6J4I0](#)
**Dilution Range**

Applications include Dot Blots (DB) and Western Blots (WB). Suitability for Immunohistochemistry (IHC) has not yet been determined. Rabbit anti-DARPP-32 (Thr75) recognizes human and mouse forms of the protein. When internally tested under ideal conditions the working dilutions were 1:1000 for DB and WB.

**Expiration Date**

12 months from date of receipt.



Western blot of rat caudate lysate showi...