
Product Datasheet

ELK1 Antibody (orb1273528)

Description

ELK1 Antibody

Species/Host

Rabbit

Reactivity

Human, Mouse, Rat

Conjugation

Unconjugated

Tested

WB

Applications
Immunogen

Elk-1 (Ser383) polyclonal antibody was raised against a synthetic phosphopeptide corresponding to amino acids residues surrounding the phosphorylated Ser383 of human Elk-1.

Target

ELK1

Form/Appearance

Liquid

Concentration

batch dependent

Storage

For long term storage -80°C is recommended, but shorter term storage at -20°C is also acceptable as aliquots may be taken without freeze/thawing due to the presence of 50% glycerol. Stock solutions are stable for a minimum of 1 year at -20°C.

Note

For research use only

Application notes

Immunolabeling of the Elk-1 protein band in a Western blot of recombinant Elk-1 is blocked by the phosphopeptide used as antigen but not by the corresponding non-phospho-Elk-1. Applications include Dot Blots (DB) and Western Blots (WB). Suitability for Immunohistochemistry (IHC) has not yet been determined. Human, mouse and rat have 100% amino acid sequence identity with the antigen used to raise the antibody. When internally tested under ideal conditions the working dilutions were 1:1000 for DB and WB.

Clonality

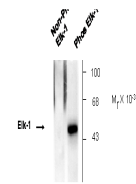
Polyclonal

MW

46

Uniprot ID
[P19419](#)
NCBI
[P19419](#)
Dilution Range

Immunolabeling of the Elk-1 protein band in a Western blot of recombinant Elk-1 is blocked by the phosphopeptide used as antigen but not by the corresponding non-phospho-Elk-1. Applications include Dot Blots (DB) and Western Blots (WB). Suitability for Immunohistochemistry (IHC) has not yet been determined. Human, mouse and rat have 100% amino acid sequence identity with the antigen used to raise the antibody. When internally tested under ideal conditions

 Anti-Phospho Ser³⁸³ Elk-1


Western blot of non-phospho- and phospho...