
Product Datasheet

Gria1 Antibody (orb1273524)

Description

Gria1 Antibody

Species/Host

Rabbit

Reactivity

Human, Mouse, Rat

Conjugation

Unconjugated

Tested Applications

IF, IHC, WB

Immunogen

GluR1 (Ser845) polyclonal antibody was raised against a synthetic phosphopeptide corresponding to amino acids residues surrounding the phospho-Ser845 of rat GluR1.

Target

Gria1

Form/Appearance

Liquid

Concentration

batch dependent

Storage

For long term storage -80°C is recommended, but shorter term storage at -20°C is also acceptable as aliquots may be taken without freeze/thawing due to the presence of 50% glycerol. Stable for one year.

Note

For research use only

Application notes

Immunolabeling of the GluR1 protein in western blots of rat brain is blocked by the Ser845 phosphopeptide used as antigen but not by the corresponding non-phosphopeptide. The antibody is purified by sequential chromatography on phospho- and non-phosphopeptide affinity columns. Antibody dilutions and tissue load should be based on tissue type and expected phosphorylation state. Initial recommended range of dilutions: 1:500 to 1:2000. Applications include Immunofluorescence (IF), Immunohistochemistry (IHC) and Western Blots (WB). Immunohistochemistry (IHC) has not yet been determined. Human, mouse and rat have 100% amino acid sequence identity with the antigen used to raise the antibody. When internally tested under ideal conditions the working dilutions were 1:1000 for IF, IHC and WB.

Clonality

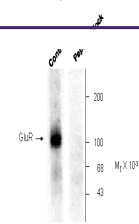
Polyclonal

MW

100

Uniprot ID
[P19490](#)
NCBI
[P19490](#)
Dilution Range

Immunolabeling of the GluR1 protein in western blots of rat brain is blocked by the Ser845 phosphopeptide used as antigen but not by the corresponding non-phosphopeptide. The antibody is purified by sequential chromatography on

 Anti-Phospho Ser⁸⁴⁵ GluR1


Western blot of rat hippocampal lysate s...