

---

## Product Datasheet

### Marcks Antibody (orb1273522)

**Description**

Marcks Antibody

**Species/Host**

Rabbit

**Reactivity**

Frog, Human, Mouse, Rat

**Conjugation**

Unconjugated

**Tested**

WB

**Applications**
**Immunogen**

MARCKS (Ser152/156) polyclonal antibody was raised against a synthetic phosphopeptide corresponding to amino acid residues surrounding the phospho-Ser152 and phospho-Ser156 of rat MARCKS.

**Target**

Marcks

**Form/Appearance**

Liquid

**Concentration**

batch dependent

**Storage**

For long term storage  $-80^{\circ}\text{C}$  is recommended, but shorter term storage at  $-20^{\circ}\text{C}$  is also acceptable as aliquots may be taken without freeze/thawing due to the presence of 50% glycerol. Stable for one year.

**Note**

For research use only

**Application notes**

Immunolabeling of the 87kDa band in rat brain homogenate is blocked by the Ser152/156 phosphopeptide but not by the non-phosphopeptide. The antibody is purified by sequential chromatography on phospho- and non-phosphopeptide affinity columns. Antibody dilutions and tissue load should be based on tissue type and expected phosphorylation state. Initial recommended range of dilutions: 1:500 to 1:2000. Applications include Dot Blots (DB) and Western Blot (WB). Suitability for Immunohistochemistry (IHC) not yet determined. Human, mouse, rat, and Xenopus have 100% amino acid sequence identity with the antigen used to raise the antibody. When internally tested under ideal conditions the working dilutions were 1:1000 for DB and WB.

**Clonality**

Polyclonal

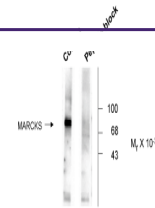
**MW**

87

**Uniprot ID**
[P30009](#)
**NCBI**
[P30009](#)
**Dilution Range**

Immunolabeling of the 87kDa band in rat brain homogenate is blocked by the Ser152/156 phosphopeptide but not by the non-phosphopeptide. The

Anti-Phospho MARCKS Ser 152/156



Western blot of rat brain lysate showing...