

---

## Product Datasheet

### MAP2K1 Antibody (orb1273521)

**Description**

MAP2K1 Antibody

**Species/Host**

Rabbit

**Reactivity**

Rat

**Conjugation**

Unconjugated

**Tested**

WB

**Applications**
**Immunogen**

MEK 1 (Thr292) polyclonal antibody was raised against a synthetic phosphopeptide corresponding to amino acids residues surrounding the phospho Thr292 of human MEK 1.

**Target**

MAP2K1

**Form/Appearance**

Liquid

**Concentration**

batch dependent

**Storage**

For long term storage  $-80^{\circ}\text{C}$  is recommended, but shorter term storage at  $-20^{\circ}\text{C}$  is also acceptable as aliquots may be taken without freeze/thawing due to the presence of 50% glycerol. Stable for one year.

**Note**

For research use only

**Application notes**

Applications include Dot Blots (DB) and Western Blots (WB). Suitability for Immunohistochemistry (IHC) has not yet been determined. When internally tested under ideal conditions the working dilutions were 1:1000 for DB and WB.

**Clonality**

Polyclonal

**MW**

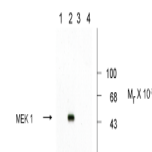
45

**Uniprot ID**
[Q02750](#)
**NCBI**
[Q02750](#)
**Dilution Range**

Applications include Dot Blots (DB) and Western Blots (WB). Suitability for Immunohistochemistry (IHC) has not yet been determined. When internally tested under ideal conditions the working dilutions were 1:1000 for DB and WB.

**Expiration Date**

12 months from date of receipt.

 Anti-Phospho Thr<sup>292</sup> MEK 1


Western blots  
of  
recombinant  
wild type a...