
Product Datasheet

Grin2b Antibody (orb1273518)

Description

Grin2b Antibody

Species/Host

Rabbit

Reactivity

Human, Mouse, Rat

Conjugation

Unconjugated

Tested

WB

Applications
Immunogen

NMDA NR2B (Tyr1472) polyclonal antibody was raised against a synthetic phosphopeptide corresponding to amino acids residues surrounding the phosphorylated Tyr1472 of rat NMDA NR2B.

Target

Grin2b

Form/Appearance

Liquid

Concentration

batch dependent

Storage

For long term storage -80°C is recommended, but shorter term storage at -20°C is also acceptable as aliquots may be taken without freeze/thawing due to the presence of 50% glycerol. Stable for one year.

Note

For research use only

Application notes

The labeling of the NR2B protein in Western blots of rat brain is blocked by the phosphopeptide but not by the dephosphopeptide. The antibody also labels bands at 65k and 115k. Applications include Dot Blots (DB) and Western Blots (WB). Human, mouse, and rat have 100% amino acid sequence identity with the antigen used to raise the antibody. When internally tested under ideal conditions the working dilutions were 1:1000 for DB and WB.

Clonality

Polyclonal

MW

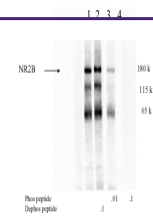
180

Uniprot ID
[Q00960](#)
NCBI
[Q00960](#)
Dilution Range

The labeling of the NR2B protein in Western blots of rat brain is blocked by the phosphopeptide but not by the dephosphopeptide. The antibody also labels bands at 65k and 115k. Applications include Dot Blots (DB) and Western Blots (WB). Human, mouse, and rat have 100% amino acid sequence identity with the antigen used to raise the antibody. When internally tested under ideal conditions the working dilutions were 1:1000 for DB and WB.

Expiration Date

12 months from date of receipt.

 Anti-Phospho Tyr¹⁴⁷² NR2B


Western blot of rat hippocampal lysate s...