

---

## Product Datasheet

### TP53 Antibody (orb1273516)

**Description**

TP53 Antibody

**Species/Host**

Rabbit

**Reactivity**

Human, Monkey

**Conjugation**

Unconjugated

**Tested**

WB

**Applications**
**Immunogen**

p53 (Ser392) polyclonal antibody was raised against a synthetic phosphopeptide corresponding to amino acids residues surrounding the phospho-Ser392 of p53.

**Target**

TP53

**Form/Appearance**

Liquid

**Concentration**

batch dependent

**Storage**

For long term storage  $-80^{\circ}\text{C}$  is recommended, but shorter term storage at  $-20^{\circ}\text{C}$  is also acceptable as aliquots may be taken without freeze/thawing due to the presence of 50% glycerol. Stable for one year.

**Note**

For research use only

**Application notes**

Immunolabeling of the 53 kDa p53 protein in Western blots of PMA treated NIH3T3 cells is blocked by the Ser392 phosphopeptide used as antigen but by the corresponding non-phosphopeptide. Applications include Dot Blots (DB) and Western Blots (WB). Immunohistochemistry: not determined. Human and some non-human primates have 100% amino acid sequence identity with the antigen used to raise the antibody. When internally tested under ideal conditions the working dilutions were 1:1000 for DB and WB.

**Clonality**

Polyclonal

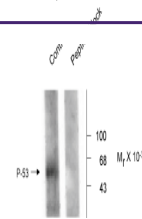
**MW**

53

**Uniprot ID**
**P04637**
**NCBI**
**P04637**
**Dilution Range**

Immunolabeling of the 53 kDa p53 protein in Western blots of PMA treated NIH3T3 cells is blocked by the Ser392 phosphopeptide used as antigen but by the corresponding non-phosphopeptide. Applications include Dot Blots (DB) and Western Blots (WB). Immunohistochemistry: not determined. Human and some non-human primates have 100% amino acid sequence identity with the antigen used to raise the antibody. When internally tested under ideal conditions the working dilutions were 1:1000 for DB and

Anti-Phospho Ser 392 P-53



Western blot of rat brain fraction lysat...