
Product Datasheet

PGR Antibody (orb1273514)

Description

PGR Antibody

Species/Host

Mouse

Reactivity

Human

Conjugation

Unconjugated

Tested

IHC, WB

Applications
Immunogen

Progesterone receptor (Ser190) monoclonal antibody was raised against a synthetic phosphopeptide corresponding to amino acids residues surrounding the phosphoSer190 of human progesterone receptor.

Target

PGR

Form/Appearance

Liquid

Concentration

batch dependent

Storage

For long term storage -80°C is recommended, but shorter term storage at -20°C is also acceptable as aliquots may be taken without freeze/thawing due to the presence of 50% glycerol. Stable for one year.

Note

For research use only

Application notes

As shown in Clemm, et al. (2000), cited above, the antibody specifically reacts with the progesterone receptor phosphorylated at Ser190 in T47D cells. Applications include Immunoblotting (IB), Immunohistochemistry (IHC) and Western Blots (WB). Initial recommended range of dilutions: 1:1000 to 1:2000. When internally tested under ideal conditions the working dilutions were 1:1000 for IB, IHC and WB.

Isotype

IgG1

Clonality

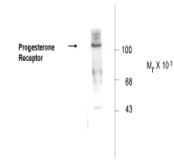
Monoclonal

MW

90/120

Uniprot ID
[P06401](#)
NCBI
[P06401](#)
Dilution Range

As shown in Clemm, et al. (2000), cited above, the antibody specifically reacts with the progesterone receptor phosphorylated at Ser190 in T47D cells. Applications include Immunoblotting (IB), Immunohistochemistry (IHC) and Western Blots (WB). Initial recommended range of dilutions: 1:1000 to 1:2000. When internally tested under ideal conditions the working dilutions were 1:1000 for IB, IHC and WB.

 Anti-Phospho Ser¹⁹⁰ Progesterone Receptor


Western blot of whole cell T47D lysate p...