

---

## Product Datasheet

### PGR Antibody (orb1273513)

**Description**

PGR Antibody

**Species/Host**

Mouse

**Reactivity**

Human

**Conjugation**

Unconjugated

**Tested Applications**

IHC, WB

**Immunogen**

Progesterone receptor (Ser294) monoclonal antibody was raised against a synthetic phosphopeptide corresponding to amino acids residues surrounding the phosphoSer294 of human progesterone receptor.

**Target**

PGR

**Form/Appearance**

Liquid

**Concentration**

batch dependent

**Storage**

For long term storage  $-80^{\circ}\text{C}$  is recommended, but shorter term storage at  $-20^{\circ}\text{C}$  is also acceptable as aliquots may be taken without freeze/thawing due to the presence of 50% glycerol. Stable for one year.

**Note**

For research use only

**Application notes**

As shown in Clemm, et al. (2000), cited above, the antibody specifically reacts with the progesterone receptor phosphorylated at Ser294 in T47D cells. Applications include Immunoblotting (IB), Immunohistochemistry (IHC) and Western Blots (WB). Initial recommended range of dilutions: 1:1000 to 1:2000. When internally tested under ideal conditions the working dilutions were 1:1000 for IB, IHC and WB.

**Isotype**

IgG1

**Clonality**

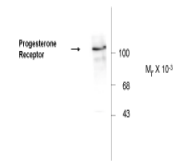
Monoclonal

**MW**

90/120

**Uniprot ID**
[P06401](#)
**NCBI**
[P06401](#)
**Dilution Range**

As shown in Clemm, et al. (2000), cited above, the antibody specifically reacts with the progesterone receptor phosphorylated at Ser294 in T47D cells. Applications include Immunoblotting (IB), Immunohistochemistry (IHC) and Western Blots (WB). Initial recommended range of dilutions: 1:1000 to 1:2000. When internally tested under ideal conditions the working dilutions were 1:1000 for IB, IHC and WB.

 Anti-Phospho Ser<sup>294</sup> Progesterone Receptor


Western blot of whole T47D lysate prepar...