
Product Datasheet

SYN1 Antibody (orb1273512)

Description

SYN1 Antibody

Species/Host

Rabbit

Reactivity

Frog, Human, Mouse, Rat

Conjugation

Unconjugated

Tested Applications

IHC, WB

Immunogen

Synapsin (Ser9) polyclonal antibody was raised against a synthetic phosphopeptide corresponding to amino acids residues surrounding the phosphorylated Ser9 of Rat Synapsin I.

Target

SYN1

Form/Appearance

Liquid

Concentration

batch dependent

Storage

For long term storage -80°C is recommended, but shorter term storage at -20°C is also acceptable as aliquots may be taken without freeze/thawing due to the presence of 50% glycerol. Stable for one year.

Note

For research use only

Application notes

Immunolabeling of the 78k Synapsin I doublet in a Western blot of rat brain homogenate is blocked by the phosphopeptide used as antigen but not by the corresponding non-phosphopeptide. The antibody also weakly labels Synapsin II (55k) which has a similar phosphorylation site to that of Ser9 on Synapsin I. Applications include Dot Blots (DB) and Western Blots (WB). Suitability for Immunohistochemistry (IHC) has not yet been determined. Human, mouse, rat and Xenopus have 100% amino acid sequence identity with the antigen used to raise the antibody. When internally tested under ideal conditions the working dilutions were 1:1000 for DB and WB.

Clonality

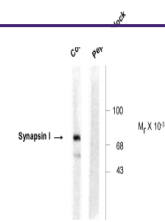
Polyclonal

MW

78

Uniprot ID
[P17599](#)
NCBI
[P17599](#)
Dilution Range

Immunolabeling of the 78k Synapsin I doublet in a Western blot of rat brain homogenate is blocked by the phosphopeptide used as antigen but not by the corresponding non-phosphopeptide. The antibody also weakly labels Synapsin II (55k) which has a similar

 Anti-Phospho Ser^p Synapsin


Western blot of rat cortex lysate showing...