
Product Datasheet

SYN1 Antibody (orb1273511)

Description

SYN1 Antibody

Species/Host

Rabbit

Reactivity

Rat

Conjugation

Unconjugated

Tested Applications

WB

Immunogen

Synapsin (Ser603) polyclonal antibody was raised against a synthetic phosphopeptide corresponding to amino acids residues surrounding the phosphorylated Ser609 of Rat Synapsin I.

Target

SYN1

Form/Appearance

Liquid

Concentration

batch dependent

Storage

For long term storage -80°C is recommended, but shorter term storage at -20°C is also acceptable as aliquots may be taken without freeze/thawing due to the presence of 50% glycerol. Stable for one year.

Note

For research use only

Application notes

Immunolabeling of the 78k Synapsin I doublet in a Western blot of rat brain homogenate is blocked by the phosphopeptide used as antigen but not by the corresponding non-phosphopeptide. Applications include Dot Blots (DB) and Western Blots (WB). Suitability for Immunohistochemistry (IHC) has not yet been determined. When internally tested under ideal conditions the working dilutions were 1:1000 for DB and WB.

Clonality

Polyclonal

MW

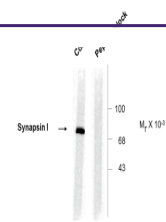
78

Uniprot ID
[P17599](#)
NCBI
[P17599](#)
Dilution Range

Immunolabeling of the 78k Synapsin I doublet in a Western blot of rat brain homogenate is blocked by the phosphopeptide used as antigen but not by the corresponding non-phosphopeptide. Applications include Dot Blots (DB) and Western Blots (WB). Suitability for Immunohistochemistry (IHC) has not yet been determined. When internally tested under ideal conditions the working dilutions were 1:1000 for DB and WB.

Expiration Date

12 months from date of receipt.

 Anti-Phospho Ser⁶⁰³ Synapsin


Western blot of rat cortex lysate showing...