
Product Datasheet

Syt1 Antibody (orb1273510)

Description

Syt1 Antibody

 Anti-Phospho-Thr²⁰² Synaptotagmin

Species/Host

Rabbit

Reactivity

Human, Mouse, Rat

Conjugation

Unconjugated

Tested

IHC, WB

Applications
Immunogen

Synaptotagmin (Thr202) polyclonal antibody was raised against a synthetic phosphopeptide corresponding to amino acids residues surrounding the phospho Thr202 of synaptotagmin.

Target

Syt1

Form/Appearance

Liquid

Concentration

batch dependent

Storage

For long term storage -80°C is recommended, but shorter term storage at -20°C is also acceptable as aliquots may be taken without freeze/thawing due to the presence of 50% glycerol. Stable for one year.

Note

For research use only

Application notes

Applications include Dot Blots (DB) and Western Blots (WB). Suitability for Immunohistochemistry (IHC) has not yet been determined. Human, mouse, and rat have 100% amino acid sequence identity with the antigen used to raise the antibody. When internally tested under ideal conditions the working dilutions were 1:1000 for DB and WB.

Clonality

Polyclonal

MW

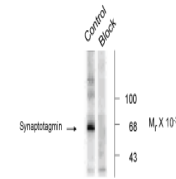
60/62

Uniprot ID
[P21707](#)
NCBI
[P21707](#)
Dilution Range

Applications include Dot Blots (DB) and Western Blots (WB). Suitability for Immunohistochemistry (IHC) has not yet been determined. Human, mouse, and rat have 100% amino acid sequence identity with the antigen used to raise the antibody. When internally tested under ideal conditions the working dilutions were 1:1000 for DB and WB.

Expiration Date

12 months from date of receipt.



Synaptotagmin
(Phospho-
Thr202)
Antibody