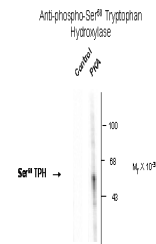


Product Datasheet

Tph1 Antibody (orb1273507)

Description	Tph1 Antibody
Species/Host	Rabbit
Reactivity	Human, Mouse, Rat
Conjugation	Unconjugated
Tested Applications	WB
Immunogen	TPH (Ser58) polyclonal antibody was raised against a synthetic phosphopeptide corresponding to amino acid residues surrounding the phosphoSer58 of TPH.
Target	Tph1
Form/Appearance	Liquid
Concentration	batch dependent
Storage	For long term storage -80°C is recommended, but shorter term storage at -20°C is also acceptable as aliquots may be taken without freeze/thawing due to the presence of 50% glycerol. Stable for one year.
Note	For research use only
Application notes	Applications include Dot Blots (DB) and Western Blots (WB). When internally tested under ideal conditions the working dilutions were 1:1000 for DB and WB.
Clonality	Polyclonal
MW	55
Uniprot ID	P09810
NCBI	P09810
Dilution Range	Applications include Dot Blots (DB) and Western Blots (WB). When internally tested under ideal conditions the working dilutions were 1:1000 for DB and WB.
Expiration Date	12 months from date of receipt.



Tryptophan Hydroxylase (Phospho-Ser58) A...