

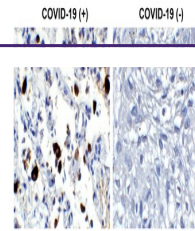
---

## Product Datasheet

### **SARS-CoV-2 (COVID-19) Nucleocapsid Antibody [3866] (orb1273021)**

**Description**

SARS-CoV-2 (COVID-19) Nucleocapsid


**Species/Host**

Mouse

**Reactivity**

Virus

**Conjugation**

Unconjugated

**Tested Applications**

ELISA, IF

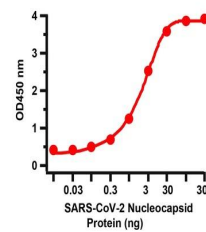
 Immunohistochemistry  
Validation of SARS-...

**Immunogen**

These newer COVID-19 nucleoprotein Mabs were developed using a recombinant, full-length nucleoprotein and then confirmed that they are reactive with the native virus itself.

**Preservatives**

Coronavirus Nucleocapsid Antibody is in a phosphate saline buffer (0.01M, pH 7.2) containing 0.1% sodium azide preservative. No stabilizing proteins have been added.


 Sandwich ELISA for  
SARS-CoV-2 (COVID-19)...

**Form/Appearance**

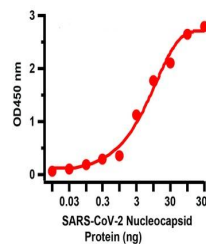
Liquid

**Concentration**

batch dependent

**Storage**

Coronavirus Nucleocapsid Antibody can be stored at -20°C, stable for one year.


 Sandwich ELISA for  
SARS-CoV-2 (COVID-19)...

**Note**

For research use only

**Application notes**

Suggested starting ranges are 1:10-1:50 for IFA and 1:20-1:200 for ELISA. BEST ELISA pairs (capture-conjugate): clones 3865-3866 / 3869-3866

**Isotype**

Mouse IgG1

**Clonality**

Monoclonal

**Dilution Range**

Suggested starting ranges are 1:10-1:50 for IFA and 1:20-1:200 for ELISA. BEST ELISA pairs (capture-conjugate): clones 3865-3866 / 3869-3866

**Expiration Date**

12 months from date of receipt.