

Product Datasheet

HER2 antibody (orb12730)

Description Rabbit polyclonal antibody to HER2

Reactivity Human, Mouse, Rat

Conjugation Unconjugated

Tested Applications IHC, WB

Immunogen A synthetic peptide of human HER2/ErbB2(NP_004439.2).

Preservatives PBS with 0.02% sodium azide,50% glycerol,pH7.3.

Storage Maintain refrigerated at 2-8°C for up to 2 weeks. For long term storage store at -20°C in small aliquots to prevent freeze-thaw cycles.

Note For research use only

Isotype IgG

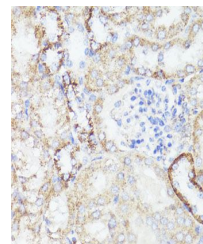
Clonality Polyclonal

MW 185KDa

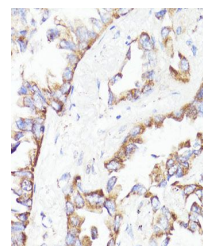
Uniprot ID **P04626**

Dilution Range WB: 1:500-1:2000, IHC-P: 1:50-1:200

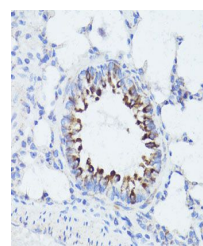
Expiration Date 12 months from date of receipt.



Immunohistochemical staining of mouse kidney tissue.



Immunohistochemical staining of human lung tissue.



Immunohistochemical staining of rat lung tissue.