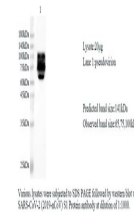


Product Datasheet

SSARS-CoV-2 (COVID-19) S1 Protein polyclonal antibody (orb1272808)

Description	SSARS-CoV-2 (COVID-19) S1 Protein polyclonal antibody
Species/Host	Rabbit
Reactivity	Virus
Conjugation	Unconjugated
Tested Applications	ELISA
Immunogen	Recombinant SARS-CoV-2 S1 Protein (Val16-Gln677)
Preservatives	PBS, pH 7.4, containing 0.05% proclin300, 50% glycerol.
Form/Appearance	Liquid
Concentration	batch dependent
Storage	Use a manual defrost freezer and avoid repeated freeze thaw cycles. Store at 2 to 8 °C for one week. Store at -20 to -80 °C for twelve months from the date of receipt.
Note	For research use only
Application notes	Elisa:1:4000~1:8000
Isotype	IgG
Clonality	Polyclonal
Dilution Range	Elisa:1:4000~1:8000
Expiration Date	12 months from date of receipt.



Various lysates were subjected to SDS-PA...