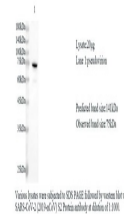


## Product Datasheet

# SARS-CoV-2 (COVID-19) S2 Protein polyclonal antibody (orb1272807)

<b>Description</b>	SARS-CoV-2 (COVID-19) S2 Protein polyclonal antibody
<b>Species/Host</b>	Rabbit
<b>Reactivity</b>	Virus
<b>Conjugation</b>	Unconjugated
<b>Tested Applications</b>	ELISA
<b>Immunogen</b>	Recombinant SARS-CoV-2 S2 Protein(Ser686-Pro1213)
<b>Preservatives</b>	PBS, pH 7.4, containing 0.05% proclin300, 50% glycerol.
<b>Form/Appearance</b>	Liquid
<b>Concentration</b>	batch dependent
<b>Storage</b>	Use a manual defrost freezer and avoid repeated freeze thaw cycles. Store at 2 to 8 °C for one week. Store at -20 to -80 °C for twelve months from the date of receipt.
<b>Note</b>	For research use only
<b>Application notes</b>	Elisa:1:4000~1:8000
<b>Isotype</b>	IgG
<b>Clonality</b>	Polyclonal
<b>Dilution Range</b>	Elisa:1:4000~1:8000
<b>Expiration Date</b>	12 months from date of receipt.



Various lysates were subjected to SDS-PA...