
Product Datasheet

CTGF Antibody (orb1272794)

Description

CTGF Antibody

Species/Host

Rabbit

Reactivity

Human

Conjugation

Unconjugated

Tested

ELISA, NeA, WB

Applications
Immunogen

Produced from sera of rabbits pre-immunized with highly pure (>98%) recombinant hCTGF. Human CTGF specific antibody was purified by affinity chromatography employing immobilized hCTGF matrix.

Target

CTGF

Form/Appearance

Lyophilized

Concentration

batch dependent

Storage

CTGF antibody is stable for at least 2 years from date of receipt at -20°C. The reconstituted antibody is stable for at least two weeks at 2-8°C. Frozen aliquots are stable for at least 6 months when stored at -20°C. Avoid repeated freeze-thaw cycles.

Note

For research use only

Application notes

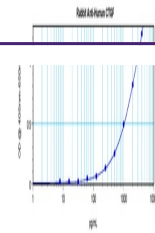
Neutralization:To yield one-half maximal inhibition [ND50] of the biological activity of hCTGF (5.0 µg/mL), a concentration of 6.0 - 9.0 µg/mL of this antibody is required.
ELISA:Indirect:To detect hCTGF by indirect ELISA (using 100 µL/well antibody solution) a concentration of 0.5 - 2.0 µg/mL of this antibody is required. This antigen affinity purified antibody, in conjunction with compatible secondary reagents, allows the detection of at least 0.2 - 0.4 ng/well of recombinant hCTGF. **Sandwich:**To detect hCTGF by sandwich ELISA (using 100 µL/well antibody solution) a concentration of 0.5 - 2.0 µg/mL of this antibody is required.
Western Blot:To detect hCTGF by Western Blot analysis this antibody can be used at a concentration of 0.1 - 0.2 µg/mL. Used in conjunction with compatible secondary reagents the detection limit for recombinant hCTGF is 1.5 - 3.0 ng/lane, under either reducing or non-reducing conditions.

Clonality

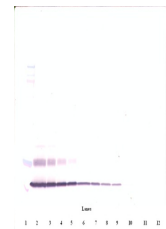
Polyclonal

Uniprot ID
P29279
NCBI
P29279
Dilution Range

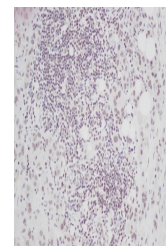
Neutralization:To yield one-half maximal inhibition [ND50] of the biological activity of hCTGF (5.0 µg/mL), a



To detect hCTGF by sandwich ELISA, using...



To detect hCTGF by Western Blot analysis...



This antibody stained formalin-fixed, pa...