
Product Datasheet

RETNLB Antibody (orb1272785)

Description

RETNLB Antibody

Species/Host

Rabbit

Reactivity

Human

Conjugation

Unconjugated

Tested

ELISA, WB

Applications
Immunogen

Produced from sera of rabbits pre-immunized with highly pure (>98%) recombinant mRELMb. Human RELMb specific antibody was purified by affinity chromatography employing immobilized RELMb matrix.

Target

RETNLB

Form/Appearance

Lyophilized

Concentration

batch dependent

Storage

RELMb antibody is stable for at least 2 years from date of receipt at -20°C. The reconstituted antibody is stable for at least two weeks at 2-8°C. Frozen aliquots are stable for at least 6 months when stored at -20°C. Avoid repeated freeze-thaw cycles.

Note

For research use only

Application notes

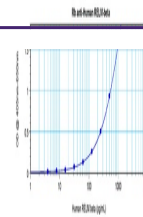
ELISA:Indirect:To detect hRELMb by indirect ELISA (using 100 µL/well antibody solution) a concentration of 0.5 - 2.0 µg/mL of this antibody is required. This antigen affinity purified antibody, in conjunction with compatible secondary reagents, allows the detection of at least 0.2 - 0.4 ng/well of recombinant hRELMb. Sandwich:To detect hRELMb by sandwich ELISA (using 100 µL/well antibody solution) a concentration of 0.5 - 2.0 µg/mL of this antibody is required. Western Blot:To detect hRELMb by Western Blot analysis this antibody can be used at a concentration of 0.1 - 0.2 µg/mL. Used in conjunction with compatible secondary reagents the detection limit for recombinant hRELMb is 1.5 - 3.0 ng/lane, under either reducing or non-reducing conditions.

Clonality

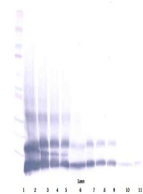
Polyclonal

Uniprot ID
[Q9BQ08](#)
NCBI
[Q9BQ08](#)
Dilution Range

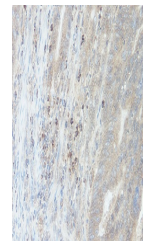
ELISA:Indirect:To detect hRELMb by indirect ELISA (using 100 µL/well antibody solution) a concentration of 0.5 - 2.0 µg/mL of this antibody is required. This antigen affinity purified antibody, in conjunction with compatible secondary reagents, allows the detection of at least 0.2 -



To detect Human RELM-beta by sandwich EL...



To detect Human RELM-beta by Western Blo...



This antibody stained formalin-fixed, pa...