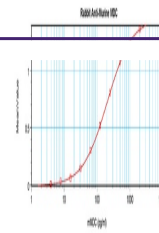


---

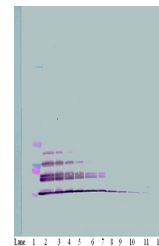
## Product Datasheet

### Ccl22 Antibody (orb1272767)

|                            |   |
|----------------------------|---|
| <b>Description</b>         | Ccl22 Antibody  |
| <b>Species/Host</b>        | Rabbit  |
| <b>Reactivity</b>          | Mouse   |
| <b>Conjugation</b>         | Unconjugated  |
| <b>Tested Applications</b> | ELISA, NeA, WB  |
| <b>Immunogen</b>           | Produced from sera of rabbits pre-immunized with highly pure (>98%) recombinant mMDC. Murine MDC specific antibody was purified by affinity chromatography employing immobilized mMDC matrix.   |
| <b>Target</b>              | Ccl22   |
| <b>Form/Appearance</b>     | Lyophilized   |
| <b>Concentration</b>       | batch dependent   |
| <b>Storage</b>             | MDC antibody is stable for at least 2 years from date of receipt at -20°C. The reconstituted antibody is stable for at least two weeks at 2-8°C. Frozen aliquots are stable for at least 6 months when stored at -20°C. Avoid repeated freeze-thaw cycles.  |
| <b>Note</b>                | For research use only   |
| <b>Application notes</b>   | <p><b>Neutralization:</b>To yield one-half maximal inhibition [ND50] of the biological activity of mMDC (100 ng/mL), a concentration of 6-9 µg/mL of this antibody is required.</p> <p><b>ELISA:Indirect:</b>To detect mMDC by indirect ELISA (using 100 µL/well antibody solution) a concentration of 0.5 - 2.0 µg/mL of this antibody is required. This antigen affinity purified antibody, in conjunction with compatible secondary reagents, allows the detection of at least 0.2 - 0.4 ng/well of recombinant mMDC.</p> <p><b>Sandwich</b>To detect mMDC by sandwich ELISA (using 100 µL/well antibody solution) a concentration of 0.5 - 2.0 µg/mL of this antibody is required. This antigen affinity purified antibody, in conjunction with our biotinylated Anti-Murine MDC as a detection antibody, allows the detection of at least 0.2 - 0.4 ng/well of recombinant mMDC.</p> <p><b>Western Blot:</b>To detect mMDC by Western Blot analysis this antibody can be used at a concentration of 0.1 - 0.2 µg/mL. Used in conjunction with compatible secondary reagents the detection limit for recombinant mMDC is 1.5 - 3.0 ng/lane, under either reducing or non-reducing conditions.</p> |
| <b>Clonality</b>           | Polyclonal  |
| <b>Uniprot ID</b>          | <a href="#">O88430</a>  |
| <b>NCBI</b>                | <a href="#">O88430</a>  |



To detect mMDC by sandwich ELISA (using ...



To detect mMDC by Western Blot analysis ...



To detect mMDC by Western Blot analysis ...