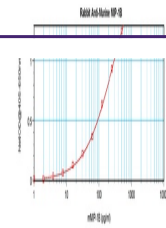


Product Datasheet

Ccl4 Antibody (orb1272750)

Description	Ccl4 Antibody
Species/Host	Rabbit
Reactivity	Mouse
Conjugation	Unconjugated
Tested Applications	ELISA, NeA, WB
Immunogen	Produced from sera of rabbits pre-immunized with highly pure (>98%) recombinant mMIP-1 β . Murine MIP-1 β specific antibody was purified by affinity chromatography employing immobilized mMIP-1 β matrix.
Target	Ccl4
Form/Appearance	Lyophilized
Concentration	batch dependent
Storage	MIP-1B antibody is stable for at least 2 years from date of receipt at -20°C. The reconstituted antibody is stable for at least two weeks at 2-8°C. Frozen aliquots are stable for at least 6 months when stored at -20°C. Avoid repeated freeze-thaw cycles.
Note	For research use only
Application notes	Neutralization: To yield one-half maximal inhibition [ND50] of the biological activity of Murine MIP-1 β (100.0 ng/mL), a concentration of 8.0-10.0 μ g/mL of this antibody is required. ELISA: Indirect: To detect mMIP-1b by indirect ELISA (using 100 μ L/well antibody solution) a concentration of 0.5 - 2.0 μ g/mL of this antibody is required. This antigen affinity purified antibody, in conjunction with compatible secondary reagents, allows the detection of at least 0.2 - 0.4 ng/well of recombinant mMIP-1b. Sandwich To detect mMIP-1b by sandwich ELISA (using 100 μ L/well antibody solution) a concentration of 0.5 - 2.0 μ g/mL of this antibody is required. This antigen affinity purified antibody, in conjunction with our biotinylated Anti-Murine MIP-1b as a detection antibody, allows the detection of at least 0.2 - 0.4 ng/well of recombinant mMIP-1b. Western Blot: To detect mMIP-1b by Western Blot analysis this antibody can be used at a concentration of 0.1 - 0.2 μ g/mL. Used in conjunction with compatible secondary reagents the detection limit for recombinant mMIP-1b is 1.5 - 3.0 ng/lane, under either reducing or non-reducing conditions.
Clonality	Polyclonal
Uniprot ID	P14097
NCBI	P14097



To detect Murine MIP-1-beta by sandwich ...



To detect Murine MIP-1-beta by Western B...



To detect Murine MIP-1-beta by Western B...