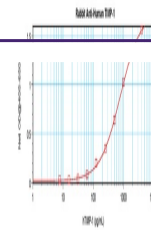


---

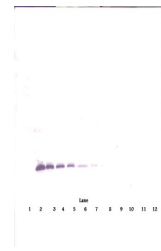
## Product Datasheet

### TIMP1 Antibody (orb1272681)

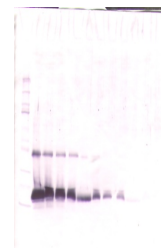
<b>Description</b>	TIMP1 Antibody
<b>Species/Host</b>	Rabbit
<b>Reactivity</b>	Human
<b>Conjugation</b>	Unconjugated
<b>Tested Applications</b>	ELISA, NeA, WB
<b>Immunogen</b>	Produced from sera of rabbits pre-immunized with highly pure (>98%) recombinant hTIMP-1 (human Tissue Inhibitor of Metalloproteinases-1). Human TIMP-1 specific antibody was purified by affinity chromatography employing immobilized hTIMP-1 matrix.
<b>Target</b>	TIMP1
<b>Form/Appearance</b>	Lyophilized
<b>Concentration</b>	batch dependent
<b>Storage</b>	TIMP-1 antibody is stable for at least 2 years from date of receipt at -20°C. The reconstituted antibody is stable for at least two weeks at 2-8°C. Frozen aliquots are stable for at least 6 months when stored at -20°C. Avoid repeated freeze-thaw cycles.
<b>Note</b>	For research use only
<b>Application notes</b>	Neutralization:To yield one-half maximal inhibition [ND50] of the biological activity of Human TIMP-1 (3.0 µg/mL), a concentration of 5.0 µg/mL of this antibody is required.ELISA:Indirect:To detect hTIMP-1 by indirect ELISA (using 100 µL/well antibody solution) a concentration of 0.5 - 2.0 µg/mL of this antibody is required. This antigen affinity purified antibody, in conjunction with compatible secondary reagents, allows the detection of at least 0.2 - 0.4 ng/well of recombinant hTIMP-1.SandwichTo detect hTIMP-1 by sandwich ELISA (using 100 µL/well antibody solution) a concentration of 0.5 - 2.0 µg/mL of this antibody is required. This antigen affinity purified antibody, in conjunction with our biotinylated Anti-Human TIMP-1 as a detection antibody, allows the detection of at least 0.2 - 0.4 ng/well of recombinant hTIMP-1. Western Blot:To detect hTIMP-1 by Western Blot analysis this antibody can be used at a concentration of 0.1 - 0.2 µg/mL. Used in conjunction with compatible secondary reagents the detection limit for recombinant hTIMP-1 is 1.5 - 3.0 ng/lane, under either reducing or non-reducing conditions.
<b>Clonality</b>	Polyclonal
<b>Uniprot ID</b>	<b>P01033</b>



To detect hTIMP-1 by sandwich ELISA (usi...



To detect hTIMP-1 by Western Blot analys...



To detect hTIMP-1 by Western Blot analys...