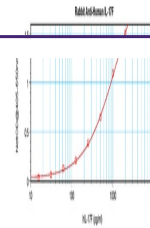


---

## Product Datasheet

### IL17F Antibody (orb1272662)

Description	IL17F Antibody	
<b>Species/Host</b>	Rabbit	
<b>Reactivity</b>	Human	
<b>Conjugation</b>	Unconjugated	
<b>Tested Applications</b>	ELISA, NeA, WB	
<b>Immunogen</b>	Produced from sera of rabbits pre-immunized with highly pure (>98%) recombinant hIL-17F. Human IL-17F specific antibody was purified by affinity chromatography employing immobilized hIL-17F matrix.	
<b>Target</b>	IL17F	
<b>Form/Appearance</b>	Lyophilized	
<b>Concentration</b>	batch dependent	
<b>Storage</b>	The lyophilized antibody is stable for at least 2 years from date of receipt at -20°C. The reconstituted antibody is stable for at least two weeks at 2-80°C. Frozen aliquots are stable for at least 6 months when stored at -20°C. Avoid repeated freeze-thaw cycles.	
<b>Note</b>	For research use only	
<b>Application notes</b>	<p><b>Neutralization:</b> To yield one-half maximal inhibition [ND50] of the biological activity of hIL-17F (50.0 ng/mL), a concentration of 0.9-1.2 µg/mL of this antibody is required.</p> <p><b>ELISA:Indirect:</b>To detect hIL-17F by indirect ELISA (using 100 µL/well antibody solution) a concentration of 0.5 - 2.0 µg/mL of this antibody is required. This antigen affinity purified antibody, in conjunction with compatible secondary reagents, allows the detection of at least 0.2 - 0.4 ng/well of recombinant hIL-17F.</p> <p><b>Sandwich</b>To detect hIL-17F by sandwich ELISA (using 100 µL/well antibody solution) a concentration of 0.5 - 2.0 µg/mL of this antibody is required. This antigen affinity purified antibody, in conjunction with our biotinylated Anti-Human IL-17F as a detection antibody, allows the detection of at least 0.2 - 0.4 ng/well of recombinant hIL-17F.</p> <p><b>Western Blot:</b>To detect hIL-17F by Western Blot analysis this antibody can be used at a concentration of 0.1 - 0.2 µg/mL. Used in conjunction with compatible secondary reagents the detection limit for recombinant hIL-17F is 1.5 - 3.0 ng/lane, under either reducing or non-reducing conditions.</p>	
<b>Clonality</b>	Polyclonal	
<b>Uniprot ID</b>	<b>Q96PD4</b>	



To detect hIL-17F by sandwich ELISA (usi...



To detect hIL-17F by Western Blot analys...



To detect hIL-17F by Western Blot analys...