
Product Datasheet

Cxcl10 Antibody (orb1272655)

Description

Cxcl10 Antibody

Species/Host

Rabbit

Reactivity

Rat

Conjugation

Unconjugated

Tested Applications

ELISA, NeA, WB

Immunogen

Produced from sera of rabbits immunized with highly pure recombinant Human Heregulin- β 1. Human Heregulin- β 1 specific antibody was purified by affinity chromatography and then biotinylated.

Target

Cxcl10

Form/Appearance

Lyophilized

Concentration

batch dependent

Storage

The lyophilized antibody is stable for at least 2 years from date of receipt at -20°C . The reconstituted antibody is stable for at least two weeks at $2-80^{\circ}\text{C}$. Frozen aliquots are stable for at least 6 months when stored at -20°C . Avoid repeated freeze-thaw cycles.

Note

For research use only

Application notes

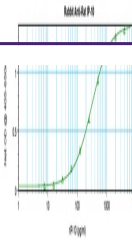
Neutralization: To yield one-half maximal inhibition [ND50] of the biological activity of Rat IP-10 (100 ng/mL), a concentration of 5.0-10.0 $\mu\text{g/mL}$ of this antibody is required. **Sandwich**To detect Rat IP-10 by sandwich ELISA (using 100 μL /well antibody solution) a concentration of 0.5 - 2.0 $\mu\text{g/mL}$ of this antibody is required. This antigen affinity purified antibody, in conjunction with our Biotinylated Anti-Rat IP-10 (38-255) as a detection antibody, allows the detection of at least 0.2 - 0.4 ng/well of recombinant Rat IP-10. **Western Blot:**To detect Rat IP-10 by Western Blot analysis this antibody can be used at a concentration of 0.1 - 0.2 $\mu\text{g/mL}$. Used in conjunction with compatible secondary reagents the detection limit for recombinant Rat IP-10 is 1.5 - 3.0 ng/lane, under either reducing or non-reducing conditions.

Clonality

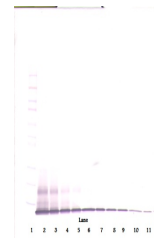
Polyclonal

Uniprot ID
[P48973](#)
NCBI
[P48973](#)
Dilution Range

Neutralization: To yield one-half maximal inhibition [ND50] of the biological activity of Rat IP-10 (100 ng/mL), a concentration of 5.0-10.0 $\mu\text{g/mL}$ of this antibody is required. **Sandwich**To detect Rat IP-10 by sandwich ELISA



To detect Rat IP-10 by sandwich ELISA (u...



To detect Rat IP-10 by Western Blot anal...



To detect Rat IP-10 by Western Blot anal...