
Product Datasheet

NRG1 Antibody (orb1272653)

Description

NRG1 Antibody

Species/Host

Rabbit

Reactivity

Human

Conjugation

Unconjugated

Tested

ELISA, NeA, WB

Applications
Immunogen

Produced from sera of rabbits immunized with highly pure recombinant Human Heregulin-B1. Human Heregulin-B1 specific antibody was purified by affinity chromatography employing an immobilized Human Heregulin-B1 matrix.

Target

NRG1

Form/Appearance

Lyophilized

Concentration

batch dependent

Storage

The lyophilized antibody is stable for at least 2 years from date of receipt at -20°C. The reconstituted antibody is stable for at least two weeks at 2-80°C. Frozen aliquots are stable for at least 6 months when stored at -20°C. Avoid repeated freeze-thaw cycles.

Note

For research use only

Application notes

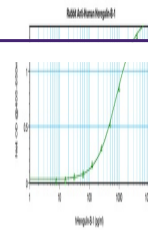
Neutralization:To yield one-half maximal inhibition [ND50] of the biological activity of hHeregulin-B1 (1.0 ng/mL), a concentration of 0.1-1.1 µg/mL of this antibody is required.
ELISA:In a sandwich ELISA To detect hHeregulin-B1 (using 100 uL/well antibody solution) a concentration of 0.5 - 2.0 µg/mL of this antibody is required. This antigen affinity purified antibody, in conjunction with our biotinylated Anti-Human hHeregulin-B1 as a detection antibody, allows the detection of at least 0.2 - 0.4 ng/well of recombinant hHeregulin-B1. **Western Blot:**To detect hHeregulin-B1 by Western Blot analysis this antibody can be used at a concentration of 0.1 - 0.2 µg/mL. Used in conjunction with compatible secondary reagents the detection limit for recombinant hHeregulin-B1 is 1.5 - 3.0 ng/lane, under either reducing or non-reducing conditions.

Clonality

Polyclonal

Uniprot ID
[Q02297](#)
NCBI
[Q02297](#)
Dilution Range

Neutralization:To yield one-half maximal inhibition [ND50] of the biological activity of hHeregulin-B1 (1.0 ng/mL), a concentration of 0.1-1.1 µg/mL of this antibody is required.
ELISA:In a sandwich ELISA To detect hHeregulin-



To detect Human Heregulin-beta1 by sandwich...



To detect Human Heregulin-beta1 by Western...



To detect Human Heregulin-beta1 by Western...