
Product Datasheet

Kitlg Antibody (Biotin) (orb1272649)

Description

Kitlg Antibody (Biotin)

Species/Host

Rabbit

Reactivity

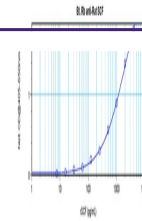
Rat

Conjugation

Biotin

Tested

WB

Applications


To detect rat SCF by sandwich ELISA (usi...

Immunogen

Produced from sera of rabbits immunized with highly pure recombinant Rat SCF. Rat SCF specific antibody was purified by affinity chromatography and then biotinylated.

Target

Kitlg

Form/Appearance

Lyophilized

Concentration

batch dependent

Storage

The lyophilized antibody is stable for at least 2 years from date of receipt at -20°C. The reconstituted antibody is stable for at least two weeks at 2-80°C. Frozen aliquots are stable for at least 6 months when stored at -20°C. Avoid repeated freeze-thaw cycles.

Note

For research use only

Application notes

To detect rat SCF by Western Blot analysis this antibody can be used at a concentration of 0.1 - 0.2 µg/mL. Used in conjunction with compatible secondary reagents the detection limit for recombinant rat SCF is 1.5 - 3.0 ng/lane, under either reducing or non-reducing conditions.

Clonality

Polyclonal

Uniprot ID
P21581
NCBI
P21581
Dilution Range

To detect rat SCF by Western Blot analysis this antibody can be used at a concentration of 0.1 - 0.2 µg/mL. Used in conjunction with compatible secondary reagents the detection limit for recombinant rat SCF is 1.5 - 3.0 ng/lane, under either reducing or non-reducing conditions.

Expiration Date

12 months from date of receipt.