
Product Datasheet

IGFBP1 Antibody (orb1272642)

Description

IGFBP1 Antibody

Species/Host

Rabbit

Reactivity

Human

Conjugation

Unconjugated

Tested

ELISA, WB

Applications
Immunogen

Produced from sera of rabbits immunized with highly pure recombinant Human IGF-BP1. Human IGF-BP1 specific antibody was purified by affinity chromatography employing an immobilized Human IGF-BP1 matrix.

Target

IGFBP1

Form/Appearance

Lyophilized

Concentration

batch dependent

Storage

The lyophilized antibody is stable for at least 2 years from date of receipt at -20°C. The reconstituted antibody is stable for at least two weeks at 2-80°C. Frozen aliquots are stable for at least 6 months when stored at -20°C. Avoid repeated freeze-thaw cycles.

Note

For research use only

Application notes

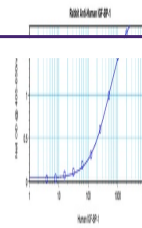
ELISA: Sandwich: To detect hIGF-BP1 by sandwich ELISA (using 100 µL/well antibody solution) a concentration of 0.5 - 2.0 µg/mL of this antibody is required. This antigen affinity purified antibody, in conjunction with Biorbyt's Biotinylated Anti-Human IGF-BP1 (38-276) as a detection antibody, allows the detection of at least 0.2 - 0.4 ng/well of recombinant hIGF-BP1. Western Blot: To detect hIGF-BP1 by Western Blot analysis this antibody can be used at a concentration of 0.1 - 0.2 µg/mL. Used in conjunction with compatible secondary reagents the detection limit for recombinant hIGF-BP1 is 1.5 - 3.0 ng/lane, under either reducing or non-reducing conditions.

Clonality

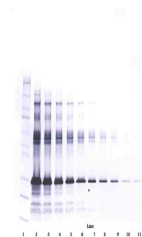
Polyclonal

Uniprot ID
[P08833](#)
NCBI
[P08833](#)
Expiration Date

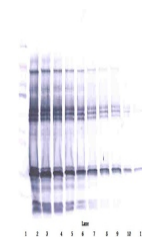
12 months from date of receipt.



To detect hIGF-BP1 by sandwich ELISA (us...



To detect hIGF-BP1 by Western Blot analy...



To detect hIGF-BP1 by Western Blot analy...