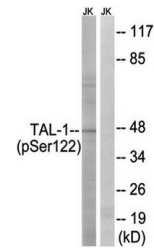


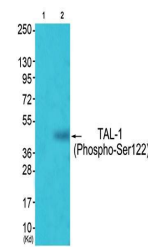
## Product Datasheet

### TAL-1 (phospho-Ser122) antibody (orb127264)

<b>Description</b>	Rabbit Polyclonal to TAL-1 (phospho-Ser122).
<b>Species/Host</b>	Rabbit
<b>Reactivity</b>	Human, Mouse
<b>Conjugation</b>	Unconjugated
<b>Tested Applications</b>	WB
<b>Immunogen</b>	Internal
<b>Concentration</b>	1mg/ml
<b>Storage</b>	Maintain refrigerated at 2-8°C for up to 2 weeks. For long term storage store at -20°C in small aliquots to prevent freeze-thaw cycles.
<b>Note</b>	For research use only
<b>Clonality</b>	Polyclonal
<b>Uniprot ID</b>	<b>P17542</b>
<b>Dilution Range</b>	WB: 1:500-1:3000, ELISA: 1:1000
<b>Expiration Date</b>	12 months from date of receipt.



Western blot analysis of extracts from J...



Western blot analysis of extracts from J...