

Product Datasheet

Csf2 Antibody (Biotin) (orb1272623)

Description

Csf2 Antibody (Biotin)

Species/Host

Rabbit

Reactivity

Rat

Conjugation

Biotin

Tested Applications

ELISA, WB

Immunogen

Produced from sera of rabbits immunized with highly pure recombinant Rat GM-CSF. Rat GM-CSF specific antibody was purified by affinity chromatography and then biotinylated.

Target

Csf2

Form/Appearance

Lyophilized

Concentration

batch dependent

Storage

The lyophilized antibody is stable for at least 2 years from date of receipt at -20°C. The reconstituted antibody is stable for at least two weeks at 2-80°C. Frozen aliquots are stable for at least 6 months when stored at -20°C. Avoid repeated freeze-thaw cycles.

Note

For research use only

Application notes

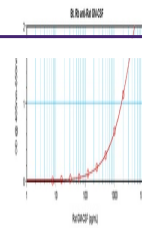
ELISA: Sandwich: To detect Human IL-17D by sandwich ELISA (using 100 µL/well antibody solution) a concentration of 0.25 - 1.0 µg/mL of this antibody is required. This biotinylated polyclonal antibody, in conjunction with Biorbyt's Polyclonal Anti-Human IL-17D (38-266) as a capture antibody, allows the detection of at least 0.2 - 0.4 ng/well of recombinant Human IL-17D. Western Blot: To detect Human IL-17D by Western Blot analysis this antibody can be used at a concentration of 0.1 - 0.2 µg/mL. Used in conjunction with compatible secondary reagents the detection limit for recombinant Human IL-17D is 1.5 - 3.0 ng/lane, under either reducing or non-reducing conditions.

Clonality

Polyclonal

Uniprot ID
[P48750](#)
NCBI
[P48750](#)
Expiration Date

12 months from date of receipt.



To detect Rat GM-CSF by sandwich ELISA (...)



To detect Rat GM-CSF by Western Blot ana...



To detect Rat GM-CSF by Western Blot ana...