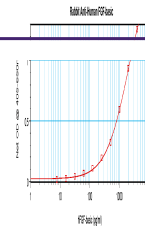
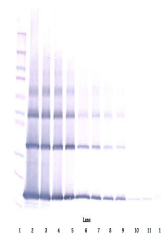

Product Datasheet

FGF2 Antibody (orb1272539)

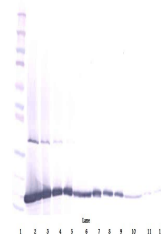
Description	FGF2 Antibody
Species/Host	Rabbit
Reactivity	Human
Conjugation	Unconjugated
Tested Applications	ELISA, NeA, WB
Immunogen	Produced from sera of rabbits pre-immunized with highly pure (>98%) recombinant hFGF-Basic (human Fibroblast Growth Factor-Basic).
Target	FGF2
Form/Appearance	Lyophilized
Concentration	batch dependent
Storage	FGF-basic antibody is stable for at least 2 years from date of receipt at -20°C. The reconstituted antibody is stable for at least two weeks at 2-8°C. Frozen aliquots are stable for at least 6 months when stored at -20°C. Avoid repeated freeze-thaw cycles.
Note	For research use only
Clonality	Polyclonal
Uniprot ID	P09038
NCBI	P09038
Dilution Range	Neutralization: To yield one-half maximal inhibition [ND50] of the biological activity of hFGF-Basic (30.0 ng/mL), a concentration of 0.46 - 0.9 µg/mL of this antibody is required. ELISA: To detect hFGF-Basic by direct ELISA (using 100 µL/well antibody solution) a concentration of at least 0.5 µg/mL of this antibody is required. This antigen affinity purified antibody, in conjunction with compatible secondary reagents, allows the detection of 0.2 - 0.4 ng/well of recombinant hFGF-Basic. Sandwich: To detect hFGF-basic by sandwich ELISA (using 100 µL/well antibody solution) a concentration of 0.5 - 2.0 µg/mL of this antibody is required. This antigen affinity purified antibody, in conjunction with our Biotinylated Anti-Human FGF-basics as a detection antibody, allows the detection of at least 0.2 - 0.4 ng/well of recombinant hFGF-basic. Western Blot: To detect hFGF-Basic by Western Blot analysis this antibody can be used at a concentration of 0.1 - 0.2 µg/mL. Used in conjunction with compatible secondary reagents the detection limit for recombinant hFGF-Basic is 1.5 - 3.0 ng/lane, under either reducing or non-reducing conditions.



To detect Human FGF-basic by sandwich ELISA



To detect Human FGF-basic by Western Blot



To detect Human FGF-basic by Western Blot