

---

## Product Datasheet

### GDNF Antibody (Biotin) (orb1272526)

**Description**

GDNF Antibody (Biotin)

**Species/Host**

Rabbit

**Reactivity**

Human

**Conjugation**

Biotin

**Tested**

ELISA, WB

**Applications**
**Immunogen**

Produced from sera of rabbits pre-immunized with highly pure (&gt;98%) recombinant hGDNF (human GDNF).

**Target**

GDNF

**Form/Appearance**

Lyophilized

**Concentration**

batch dependent

**Storage**

GDNF antibody is stable for at least 2 years from date of receipt at -20°C. The reconstituted antibody is stable for at least two weeks at 2-8°C. Frozen aliquots are stable for at least 6 months when stored at -20°C. Avoid repeated freeze-thaw cycles.

**Note**

For research use only

**Application notes**

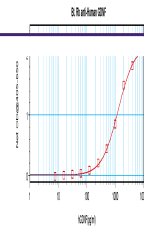
ELISA: Sandwich: To detect hGDNF by sandwich ELISA (using 100 µL/well antibody solution) a concentration of 0.25 - 1.0 µg/mL of this antibody is required. This biotinylated polyclonal antibody, in conjunction with our Polyclonal Anti-Human GDNF (XP-5143) as a capture antibody, allows the detection of at least 0.2 - 0.4 ng/well of recombinant hGDNF. Western Blot: To detect hGDNF by Western Blot analysis this antibody can be used at a concentration of 0.1 - 0.2 µg/mL. Used in conjunction with compatible secondary reagents the detection limit for recombinant hGDNF is 1.5 - 3.0 ng/lane, under either reducing or non-reducing conditions.

**Clonality**

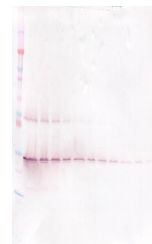
Polyclonal

**Uniprot ID**
[P39905](#)
**NCBI**
[P39905](#)
**Dilution Range**

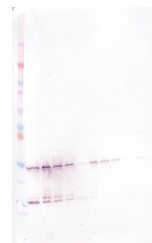
ELISA: Sandwich: To detect hGDNF by sandwich ELISA (using 100 µL/well antibody solution) a concentration of 0.25 - 1.0 µg/mL of this antibody is required. This biotinylated polyclonal antibody, in conjunction with our Polyclonal Anti-Human GDNF (XP-5143) as a capture antibody, allows the detection of at least 0.2 - 0.4 ng/well of recombinant hGDNF. Western Blot: To detect hGDNF by Western Blot analysis this antibody can be



To detect hGDNF by sandwich ELISA (using...



To detect hGDNF by Western Blot analysis...



To detect hGDNF by Western Blot analysis...