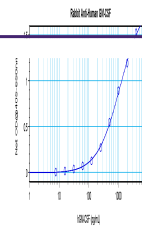


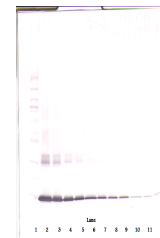
## Product Datasheet

### CSF2 Antibody (orb1272525)

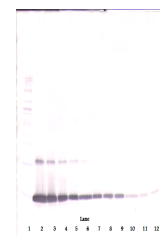
<b>Description</b>	CSF2 Antibody
<b>Species/Host</b>	Rabbit
<b>Reactivity</b>	Human
<b>Conjugation</b>	Unconjugated
<b>Tested Applications</b>	ELISA, NeA, WB
<b>Immunogen</b>	Produced from sera of rabbits pre-immunized with highly pure (>98%) recombinant hGM-CSF (human Granulocyte Macrophage Colony Stimulating Factor).
<b>Target</b>	CSF2
<b>Form/Appearance</b>	Lyophilized
<b>Concentration</b>	batch dependent
<b>Storage</b>	GM-CSF antibody is stable for at least 2 years from date of receipt at -20°C. The reconstituted antibody is stable for at least two weeks at 2-8°C. Frozen aliquots are stable for at least 6 months when stored at -20°C. Avoid repeated freeze-thaw cycles.
<b>Note</b>	For research use only
<b>Clonality</b>	Polyclonal
<b>Uniprot ID</b>	<a href="#">P04141</a>
<b>NCBI</b>	<a href="#">P04141</a>
<b>Dilution Range</b>	Neutralization: To yield one-half maximal inhibition [ND50] of the biological activity of hGM-CSF (1.0 ng/mL), a concentration of 0.30-0.50 µg/mL of this antibody is required. ELISA: To detect hGM-CSF by direct ELISA (using 100 µL/well antibody solution) a concentration of at least 0.5 µg/mL of this antibody is required. This antigen affinity purified antibody, in conjunction with compatible secondary reagents, allows the detection of 0.2 - 0.4 ng/well of recombinant hGM-CSF. Sandwich: To detect hGM-CSF by sandwich ELISA (using 100 µL/well antibody solution) a concentration of 0.5 - 2.0 µg/mL of this antibody is required. This antigen affinity purified antibody, in conjunction with our Biotinylated Anti-Human GM-CSFs as a detection antibody, allows the detection of at least 0.2 - 0.4 ng/well of recombinant hGM-CSF. Western Blot: To detect hGM-CSF by Western Blot analysis this antibody can be used at a concentration of 0.1 - 0.2 µg/mL. Used in conjunction with compatible secondary reagents the detection limit for recombinant hGM-CSF is 1.5 - 3.0 ng/lane, under either reducing or non-reducing conditions.



To detect hGM-CSF by sandwich ELISA (usi...



To detect hGM-CSF by Western Blot analys...



To detect hGM-CSF by Western Blot analys...