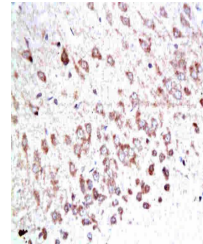


Product Datasheet

Mst1 (phospho-Thr183) antibody (orb127251)

Description	Mst1 (phospho-Thr183) antibody
Species/Host	Rabbit
Reactivity	Human
Conjugation	Unconjugated
Tested Applications	WB
Immunogen	KLH conjugated Synthesised phosphopeptide derived from human Mst1 around the phosphorylation site of Thr183 (RN(p-T)VI)
Target	Phospho-Mst1(Thr183) + Mst2(Thr180)
Preservatives	0.01M TBS(pH7.4) with 1% rAlbumin, 0.03% Proclin300 and 50% Glycerol.
Form/Appearance	Liquid
Concentration	1mg/ml
Storage	Shipped at 4°C. Store at -20 °C for one year. Avoid repeated freeze/thaw cycles.
Note	For research use only
Isotype	IgG
Clonality	Polyclonal
MW	19/37/56 kDa
Uniprot ID	Q13043
Dilution Range	WB=1:500-2000
Expiration Date	12 months from date of receipt.



Immunohistochemical analysis of paraffin...



Western Blot analysis of rat brain tissu...