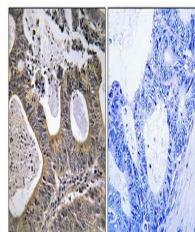


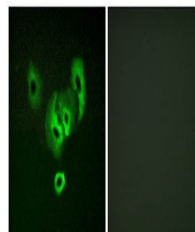
Product Datasheet

STEA2 antibody (orb127250)

Description	Rabbit Polyclonal to STEA2.
Species/Host	Rabbit
Reactivity	Human, Mouse
Conjugation	Unconjugated
Tested Applications	IF, IHC
Immunogen	C-terminal
Concentration	1mg/ml
Storage	Maintain refrigerated at 2-8°C for up to 2 weeks. For long term storage store at -20°C in small aliquots to prevent freeze-thaw cycles.
Note	For research use only
Clonality	Polyclonal
Uniprot ID	Q8NFT2
Dilution Range	IHC-P: 1:50-1:100, IF/ICC: 1:00-1:500, ELISA: 1:1000
Expiration Date	12 months from date of receipt.



Immunohistochemical analysis of formalin...



Confocal immunofluorescence analysis of ...