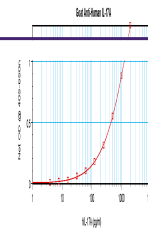


---

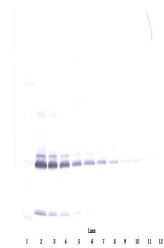
## Product Datasheet

### IL17A Antibody (orb1272479)

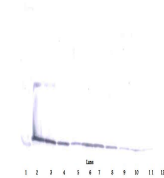
Description	IL17A Antibody
<b>Species/Host</b>	Goat
<b>Reactivity</b>	Human
<b>Conjugation</b>	Unconjugated
<b>Tested Applications</b>	ELISA, NeA, WB
<b>Immunogen</b>	Produced from sera of goats pre-immunized with highly pure (>98%) recombinant hIL-17 (human Interleukin-17).
<b>Target</b>	IL17A
<b>Form/Appearance</b>	Lyophilized
<b>Concentration</b>	batch dependent
<b>Storage</b>	IL-17 antibody is stable for at least 2 years from date of receipt at -20°C. The reconstituted antibody is stable for at least two weeks at 2-8°C. Frozen aliquots are stable for at least 6 months when stored at -20°C. Avoid repeated freeze-thaw cycles.
<b>Note</b>	For research use only
<b>Application notes</b>	<p><b>Neutralization:</b>To yield one-half maximal inhibition [ND50] of the biological activity of Human IL-17A (50.00 ng/mL), a concentration of 0.43 - 0.65 µg/mL of this antibody is required.</p> <p><b>ELISA:</b>To detect hIL-17A by indirect ELISA (using 100 µL/well antibody solution) a concentration of 0.5 - 2.0 µg/mL of this antibody is required. This antigen affinity purified antibody, in conjunction with compatible secondary reagents, allows the detection of at least 0.2 - 0.4 ng/well of recombinant hIL-17A.</p> <p><b>Sandwich:</b>To detect hIL-17A by sandwich ELISA (using 100 µL/well antibody solution) a concentration of 0.5 - 2.0 µg/mL of this antibody is required. This antigen affinity purified antibody, in conjunction with our Biotinylated Anti-Human IL-17A (XP-5171Bt) as a detection antibody, allows the detection of at least 0.2 - 0.4 ng/well of recombinant hIL-17A.</p> <p><b>Western Blot:</b>To detect hIL-17 by Western Blot analysis this antibody can be used at a concentration of 0.1 - 0.2 µg/mL. Used in conjunction with compatible secondary reagents the detection limit for recombinant hIL-17 is 1.5 - 3.0 ng/lane, under either reducing or non-reducing conditions.</p>
<b>Clonality</b>	Polyclonal
<b>Uniprot ID</b>	<a href="#">Q16552</a>
<b>NCBI</b>	<a href="#">Q16552</a>



To detect hIL-17A by sandwich ELISA (usi...



To detect hIL-17A by Western Blot analys...



To detect hIL-17A by Western Blot analys...