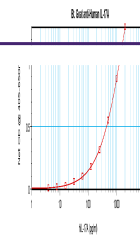

Product Datasheet

IL17A Antibody (Biotin) (orb1272478)

Description	IL17A Antibody (Biotin)
Species/Host	Goat
Reactivity	Human
Conjugation	Biotin
Tested Applications	ELISA, WB
Immunogen	Produced from sera of goats pre-immunized with highly pure (>98%) recombinant hIL-17 (human Interleukin-17).
Target	IL17A
Form/Appearance	Lyophilized
Concentration	batch dependent
Storage	IL-17 antibody is stable for at least 2 years from date of receipt at -20°C. The reconstituted antibody is stable for at least two weeks at 2-8°C. Frozen aliquots are stable for at least 6 months when stored at -20°C. Avoid repeated freeze-thaw cycles.
Note	For research use only
Application notes	ELISA: Sandwich: To detect hIL-17A by sandwich ELISA (using 100 µL/well antibody solution) a concentration of 0.25 - 1.0 µg/mL of this antibody is required. This biotinylated polyclonal antibody, in conjunction with our Polyclonal Anti-Human IL-17A (XP-5172) as a capture antibody, allows the detection of at least 0.2 - 0.4 ng/well of recombinant hIL-17A. Western Blot: To detect hIL-17 by Western Blot analysis this antibody can be used at a concentration of 0.1 - 0.2 µg/mL. Used in conjunction with compatible secondary reagents the detection limit for recombinant hIL-17 is 1.5 - 3.0 ng/lane, under either reducing or non-reducing conditions.
Clonality	Polyclonal
Uniprot ID	Q16552
NCBI	Q16552
Dilution Range	ELISA: Sandwich: To detect hIL-17A by sandwich ELISA (using 100 µL/well antibody solution) a concentration of 0.25 - 1.0 µg/mL of this antibody is required. This biotinylated polyclonal antibody, in conjunction with our Polyclonal Anti-Human IL-17A (XP-5172) as a capture antibody, allows the detection of at least 0.2 - 0.4 ng/well of recombinant hIL-17A. Western Blot: To detect



To detect hIL-17A by sandwich ELISA (usi...