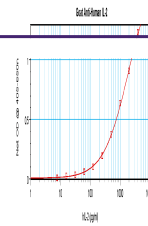
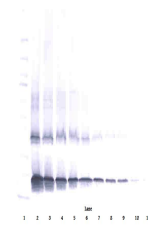

Product Datasheet

IL2 Antibody (orb1272463)

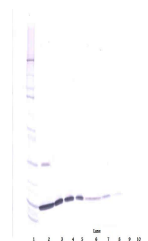
Description	IL2 Antibody
Species/Host	Goat
Reactivity	Human
Conjugation	Unconjugated
Tested Applications	ELISA, WB
Immunogen	Produced from sera of goats pre-immunized with highly pure (>98%) recombinant hIL-2 (human Interleukin-2).
Target	IL2
Form/Appearance	Lyophilized
Concentration	batch dependent
Storage	IL-2 antibody is stable for at least 2 years from date of receipt at -20°C. The reconstituted antibody is stable for at least two weeks at 2-8°C. Frozen aliquots are stable for at least 6 months when stored at -20°C. Avoid repeated freeze-thaw cycles.
Note	For research use only
Clonality	Polyclonal
Uniprot ID	P60568
NCBI	P60568
Dilution Range	<p>ELISA: To detect hIL-2 by direct ELISA (using 100 µL/well antibody solution) a concentration of at least 0.5 µg/mL of this antibody is required. This antigen affinity purified antibody, in conjunction with compatible secondary reagents, allows the detection of 0.2 - 0.4 ng/well of recombinant hIL-2. Sandwich To detect hIL-2 by sandwich ELISA (using 100 µL/well antibody solution) a concentration of 0.5 - 2.0 µg/mL of this antibody is required. This antigen affinity purified antibody, in conjunction with our Biotinylated Anti-Human IL-2 as a detection antibody, allows the detection of at least 0.2 - 0.4 ng/well of recombinant hIL-2. Western Blot: To detect hIL-2 by Western Blot analysis this antibody can be used at a concentration of 0.1 - 0.2 µg/mL. Used in conjunction with compatible secondary reagents the detection limit for recombinant hIL-2 is 1.5 - 3.0 ng/lane, under either reducing or non-reducing conditions.</p>
Expiration Date	12 months from date of receipt.



To detect hIL-2 by sandwich ELISA (using...



To detect hIL-2 by Western Blot analysis...



To detect hIL-2 by Western Blot analysis...