
Product Datasheet

IL3 Antibody (Biotin) (orb1272457)

Description

IL3 Antibody (Biotin)

Species/Host

Rabbit

Reactivity

Human

Conjugation

Biotin

Tested

ELISA, WB

Applications
Immunogen

Produced from sera of rabbits pre-immunized with highly pure (>98%) recombinant hIL-3 (human IL-3).

Target

IL3

Form/Appearance

Lyophilized

Concentration

batch dependent

Storage

IL-3 antibody is stable for at least 2 years from date of receipt at -20°C. The reconstituted antibody is stable for at least two weeks at 2-8°C. Frozen aliquots are stable for at least 6 months when stored at -20°C. Avoid repeated freeze-thaw cycles.

Note

For research use only

Application notes

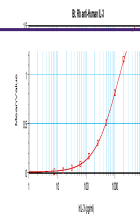
ELISA: Sandwich: To detect hIL-3 by sandwich ELISA (using 100 µL/well antibody solution) a concentration of 0.25 - 1.0 µg/mL of this antibody is required. This biotinylated polyclonal antibody, in conjunction with our Polyclonal Anti-Human IL-3 (XP-5185) as a capture antibody, allows the detection of at least 0.2 - 0.4 ng/well of recombinant hIL-3. Western Blot: To detect hIL-3 by Western Blot analysis this antibody can be used at a concentration of 0.1 - 0.2 µg/mL. Used in conjunction with compatible secondary reagents the detection limit for recombinant hIL-3 is 1.5 - 3.0 ng/lane, under either reducing or non-reducing conditions.

Clonality

Polyclonal

Uniprot ID
[P08700](#)
NCBI
[P08700](#)
Dilution Range

ELISA: Sandwich: To detect hIL-3 by sandwich ELISA (using 100 µL/well antibody solution) a concentration of 0.25 - 1.0 µg/mL of this antibody is required. This biotinylated polyclonal antibody, in conjunction with our Polyclonal Anti-Human IL-3 (XP-5185) as a capture antibody, allows the detection of at least 0.2 - 0.4 ng/well of recombinant hIL-3. Western Blot: To detect hIL-3 by Western Blot analysis this antibody can be used at a concentration of 0.1 - 0.2 µg/mL. Used in conjunction



To detect hIL-3 by sandwich ELISA (using...