

Product Datasheet

CXCL10 Antibody (orb1272430)

Description

CXCL10 Antibody

Species/Host

Rabbit

Reactivity

Human

Conjugation

Unconjugated

Tested Applications

ELISA, NeA, WB

Applications
Immunogen

Produced from sera of rabbits pre-immunized with highly pure (>98%) recombinant hIP-10 (human IP-10).

Target

CXCL10

Form/Appearance

Lyophilized

Concentration

batch dependent

Storage

IP-10 antibody is stable for at least 2 years from date of receipt at -20°C. The reconstituted antibody is stable for at least two weeks at 2-8°C. Frozen aliquots are stable for at least 6 months when stored at -20°C. Avoid repeated freeze-thaw cycles.

Note

For research use only

Clonality

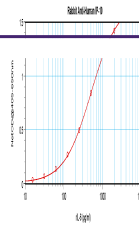
Polyclonal

Uniprot ID
P02778
NCBI
P02778
Dilution Range

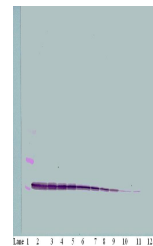
Neutralization: To yield one-half maximal inhibition [ND50] of the biological activity of hIP-10 (100.0 ng/mL), a concentration of 2.0 - 3.0 µg/mL of this antibody is required. ELISA: To detect hIP-10 by direct ELISA (using 100 µL/well antibody solution) a concentration of at least 0.5 µg/mL of this antibody is required. This antigen affinity purified antibody, in conjunction with compatible secondary reagents, allows the detection of 0.2 - 0.4 ng/well of recombinant hIP-10. Sandwich: To detect hIP-10 by sandwich ELISA (using 100 µL/well antibody solution) a concentration of 0.5 - 2.0 µg/mL of this antibody is required. This antigen affinity purified antibody, in conjunction with our Biotinylated Anti-Human IP-10 as a detection antibody, allows the detection of at least 0.2 - 0.4 ng/well of recombinant hIP-10. Western Blot: To detect hIP-10 by Western Blot analysis this antibody can be used at a concentration of 0.1 - 0.2 µg/mL. Used in conjunction with compatible secondary reagents the detection limit for recombinant hIP-10 is 1.5 - 3.0 ng/lane, under either reducing or non-reducing conditions.

Expiration Date

12 months from date of receipt.



To detect hIP-10 by sandwich ELISA (usin...



To detect hIP-10 by Western Blot analysi...



To detect hIP-10 by Western Blot analysi...