
Product Datasheet

CCL3L1 Antibody (orb1272418)

Description

CCL3L1 Antibody

Species/Host

Goat

Reactivity

Human

Conjugation

Unconjugated

Tested Applications

ELISA, WB

Applications

Produced from sera of goats pre-immunized with highly pure (>98%) recombinant hLD78 β (human LD78 β).

Target

CCL3L1

Form/Appearance

Lyophilized

Concentration

batch dependent

Storage

LD78-B antibody is stable for at least 2 years from date of receipt at -20°C. The reconstituted antibody is stable for at least two weeks at 2-8°C. Frozen aliquots are stable for at least 6 months when stored at -20°C. Avoid repeated freeze-thaw cycles.

Note

For research use only

Clonality

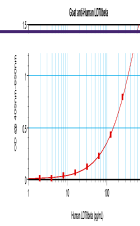
Polyclonal

Uniprot ID
[P16619](#)
NCBI
[P16619](#)
Dilution Range

ELISA: To detect hLD78 β by direct ELISA (using 100 μ L/well antibody solution) a concentration of at least 0.5 μ g/mL of this antibody is required. This antigen affinity purified antibody, in conjunction with compatible secondary reagents, allows the detection of 0.2 - 0.4 ng/well of recombinant hLD78 β . Sandwich: To detect hLD78 β by sandwich ELISA (using 100 μ L/well antibody solution) a concentration of 0.5 - 2.0 μ g/mL of this antibody is required. This antigen affinity purified antibody, in conjunction with our Biotinylated Anti-Human LD78 β as a detection antibody, allows the detection of at least 0.2 - 0.4 ng/well of recombinant hLD78 β . Western Blot: To detect hLD78 β by Western Blot analysis this antibody can be used at a concentration of 0.1 - 0.2 μ g/mL. Used in conjunction with compatible secondary reagents the detection limit for recombinant hLD78 β is 1.5 - 3.0 ng/lane, under either reducing or non-reducing conditions.

Expiration Date

12 months from date of receipt.



To detect Human LD78-beta by sandwich ELISA.



To detect Human LD78-beta by Western Blot.



To detect Human LD78-beta by Western Blot.