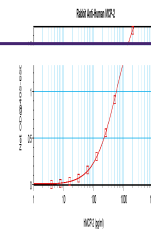


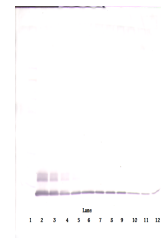
## Product Datasheet

### CCL8 Antibody (orb1272400)

|                            |  |
|----------------------------|--|
| <b>Description</b>         | CCL8 Antibody  |
| <b>Species/Host</b>        | Rabbit   |
| <b>Reactivity</b>          | Human  |
| <b>Conjugation</b>         | Unconjugated   |
| <b>Tested Applications</b> | ELISA, WB  |
| <b>Immunogen</b>           | Produced from sera of rabbits pre-immunized with highly pure (>98%) recombinant hMCP-2 (human Macrophage/Monocyte chemotactic protein-2).  |
| <b>Target</b>              | CCL8   |
| <b>Form/Appearance</b>     | Lyophilized  |
| <b>Concentration</b>       | batch dependent  |
| <b>Storage</b>             | MCP-2 antibody is stable for at least 2 years from date of receipt at -20°C. The reconstituted antibody is stable for at least two weeks at 2-8°C. Frozen aliquots are stable for at least 6 months when stored at -20°C. Avoid repeated freeze-thaw cycles.   |
| <b>Note</b>                | For research use only  |
| <b>Clonality</b>           | Polyclonal   |
| <b>Uniprot ID</b>          | <b>P80075</b>  |
| <b>NCBI</b>                | <b>P80075</b>  |
| <b>Dilution Range</b>      | ELISA:To detect hMCP-2 by direct ELISA (using 100 µL/well antibody solution) a concentration of at least 0.5 µg/mL of this antibody is required. This antigen affinity purified antibody, in conjunction with compatible secondary reagents, allows the detection of 0.2 - 0.4 ng/well of recombinant hMCP-2.Sandwich:To detect hMCP-2 by sandwich ELISA (using 100 µL/well antibody solution) a concentration of 0.5 - 2.0 µg/mL of this antibody is required. This antigen affinity purified antibody, in conjunction with our Biotinylated Anti-Human MCP-2as a detection antibody, allows the detection of at least 0.2 - 0.4 ng/well of recombinant hMCP-2. Western Blot:To detect hMCP-2 by Western Blot analysis this antibody can be used at a concentration of 0.1 - 0.2 µg/mL. Used in conjunction with compatible secondary reagents the detection limit for recombinant hMCP-2 is 1.5 - 3.0 ng/lane, under either reducing or non-reducing conditions. |
| <b>Expiration Date</b>     | 12 months from date of receipt.  |



To detect hMCP-2 by sandwich ELISA (usin...



To detect hMCP-2 by Western Blot analysi...



To detect hMCP-2 by Western Blot analysi...