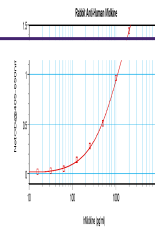
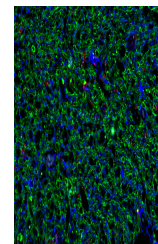

Product Datasheet

MDK Antibody (orb1272380)

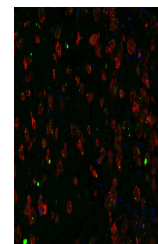
Description	MDK Antibody
Species/Host	Rabbit
Reactivity	Human
Conjugation	Unconjugated
Tested Applications	ELISA, WB
Immunogen	Produced from sera of rabbits pre-immunized with highly pure (>98%) recombinant hMidkine.
Target	MDK
Form/Appearance	Lyophilized
Concentration	batch dependent
Storage	Midkine antibody is stable for at least 2 years from date of receipt at -20°C. The reconstituted antibody is stable for at least two weeks at 2-8°C. Frozen aliquots are stable for at least 6 months when stored at -20°C. Avoid repeated freeze-thaw cycles.
Note	For research use only
Clonality	Polyclonal
Uniprot ID	P21741
NCBI	P21741
Dilution Range	ELISA:To detect hMidkine by direct ELISA (using 100 µL/well antibody solution) a concentration of at least 0.5 µg/mL of this antibody is required. This antigen affinity purified antibody, in conjunction with compatible secondary reagents, allows the detection of 0.2 - 0.4 ng/well of recombinant hMidkine. Sandwich:To detect hMidkine by sandwich ELISA (using 100 µL/well antibody solution) a concentration of 0.5 - 2.0 µg/mL of this antibody is required. This antigen affinity purified antibody, in conjunction with our Biotinylated Anti-Human Midkine as a detection antibody, allows the detection of at least 0.2 - 0.4 ng/well of recombinant hMidkine. Western Blot:To detect hMidkine by Western Blot analysis this antibody can be used at a concentration of 0.1 - 0.2 µg/mL. Used in conjunction with compatible secondary reagents the detection limit for recombinant hMidkine is 1.5 - 3.0 ng/lane, under either reducing or non-reducing conditions.
Expiration Date	12 months from date of receipt.



To detect hMidkine by sandwich ELISA (us...



This antibody stained human brain stroke...



This antibody stained human brain stroke...