
Product Datasheet

Ccl3 Antibody (Biotin) (orb1272374)

Description

Ccl3 Antibody (Biotin)

Species/Host

Rabbit

Reactivity

Rat

Conjugation

Biotin

Tested

ELISA, WB

Applications
Immunogen

Produced from sera of rabbits pre-immunized with highly pure (>98%) recombinant rat MIP-1-alpha (rat MIP-1-alpha).

Target

Ccl3

Form/Appearance

Lyophilized

Concentration

batch dependent

Storage

MIP-1a antibody is stable for at least 2 years from date of receipt at -20°C. The reconstituted antibody is stable for at least two weeks at 2-8°C. Frozen aliquots are stable for at least 6 months when stored at -20°C. Avoid repeated freeze-thaw cycles.

Note

For research use only

Application notes

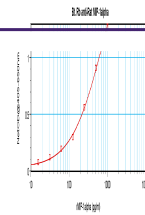
ELISA: Sandwich: To detect Rat MIP-1α by sandwich ELISA (using 100 μL/well antibody solution) a concentration of 0.25 - 1.0 μg/mL of this antibody is required. This biotinylated polyclonal antibody, in conjunction with our Polyclonal Anti-Rat MIP-1α (XP-5233) as a capture antibody, allows the detection of at least 0.2 - 0.4 ng/well of recombinant Rat MIP-1α. Western Blot: To detect rat MIP-1-α by Western Blot analysis this antibody can be used at a concentration of 0.1 - 0.2 μg/mL. Used in conjunction with compatible secondary reagents the detection limit for recombinant rat MIP-1-α is 1.5 - 3.0 ng/lane, under either reducing or non-reducing conditions.

Clonality

Polyclonal

Uniprot ID
[P50229](#)
NCBI
[P50229](#)
Dilution Range

ELISA: Sandwich: To detect Rat MIP-1α by sandwich ELISA (using 100 μL/well antibody solution) a concentration of 0.25 - 1.0 μg/mL of this antibody is required. This biotinylated polyclonal antibody, in conjunction with our Polyclonal Anti-Rat MIP-1α (XP-5233) as a capture antibody, allows the detection of at least 0.2 - 0.4 ng/well of recombinant Rat MIP-1α. Western Blot: To



To detect Rat MIP-1-alpha by sandwich ELISA...